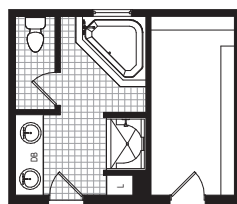




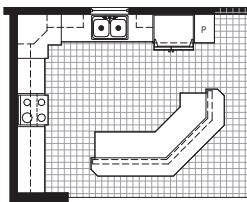
# Bismarck

The Bismarck floor plan offers three bedrooms to the front side of the home, each offering comfortable space and generous closet room. The utility room includes the extra storage cabinets you'll be sure to love. Select the options to include a utility sink and living room fireplace to begin customizing this home.

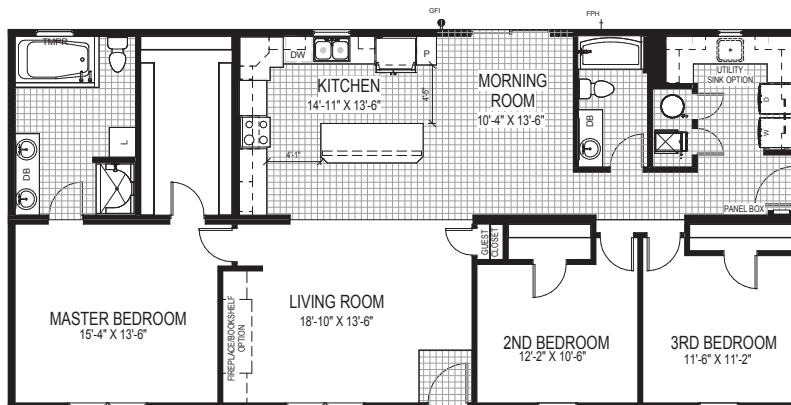
STYLE: Ranch  
 SQUARE FEET: 1725  
 BEDROOMS: 3  
 BATHROOMS: 2  
 DIMENSION: 28'9" x 60'0"



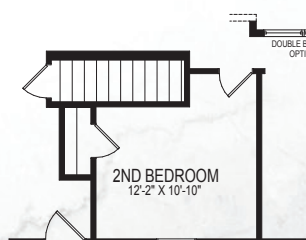
MASTER BATH OPTION



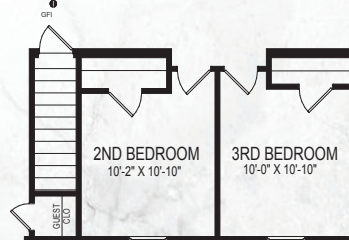
KITCHEN OPTION  
 W/ ILR06 ISLAND



DESIGN AND CONSTRUCTION OF A GARAGE IS THE RESPONSIBILITY OF OTHERS. ALL STATE, MUNICIPAL AND LOCAL CODES SHALL BE ADHERED TO. IN THE ABSENCE OF THE ABOVE CODES, THE INTERNATIONAL RESIDENTIAL CODE (IRC) AS ADOPTED IN YOUR JURISDICTION SHALL BE USED AS A MINIMUM.



STAIR OPTION



2ND STAIR OPTION