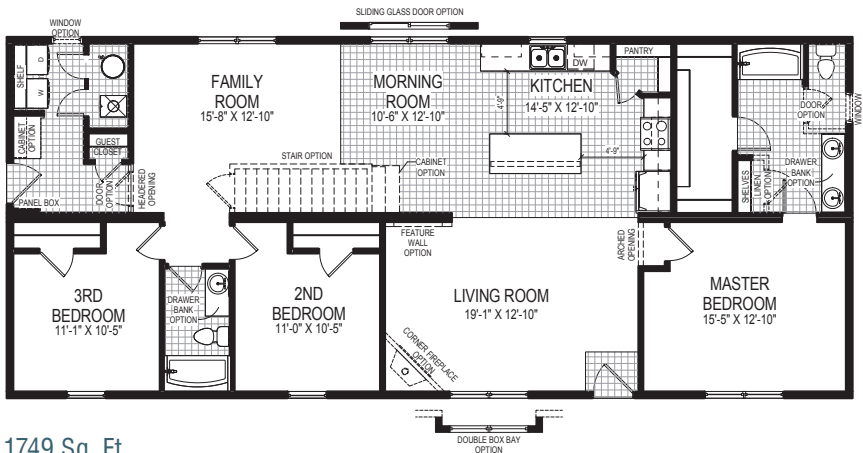




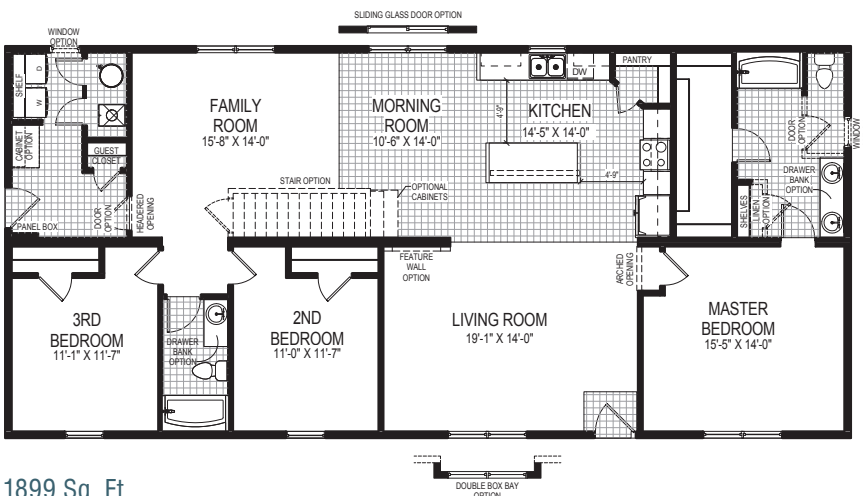
1749 / 1899 Sq. Ft.

# Juniper

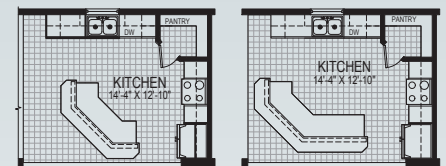
This design features an open floor plan which is sure to meet the needs of any family. A variety of custom options are available, including a front garage layout, a cape cod roof design, and even more features for the master bathroom.



1749 Sq. Ft.  
27'4" x 64'0"

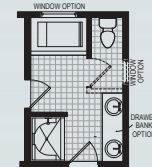


1899 Sq. Ft.  
29'8" x 64'0"

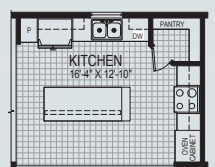


ALTERNATE KITCHEN  
w/ LR07 ISLAND

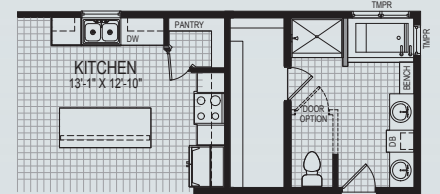
ALTERNATE KITCHEN  
w/ LR06 ISLAND



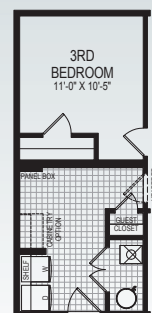
ALTERNATE 5-PIECE  
MASTER BATH



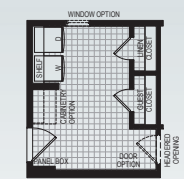
ALTERNATE KITCHEN  
WALL OVEN & COOKTOP



MONOGRAM BATH OPTION



ALTERNATE FRONT  
GARAGE LAYOUT



FURNACE & WH IN BASEMENT



OPTIONAL  
4TH BEDROOM  
(WITHOUT STAIRS)