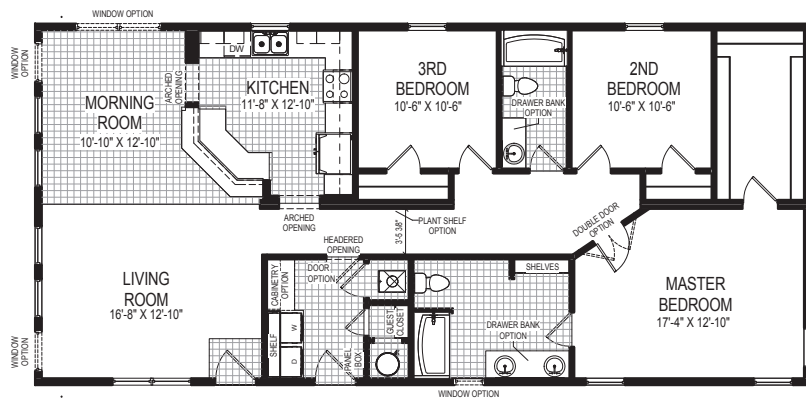




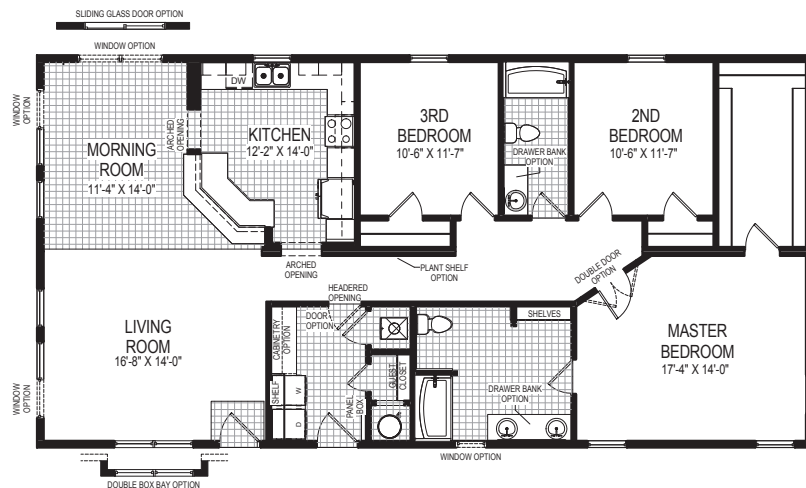
1585 / 1721 Sq. Ft.

Cypress

A slightly larger version of the Chestnut, the Cypress floor plan offers the perfect solution for focused views from the front room. Add trapezoid transom windows and a front door to the porch option for an elegant touch. A large master suite is an added bonus to this plan.



1585 Sq. Ft.
27'4" x 58'0"



1721 Sq. Ft.
29'8" x 58'0"

